

# Homes

NSW

Orlando Sentinel • OrlandoSentinel.com

SUNDAY, SEPTEMBER 12, 2004 • SECTION J

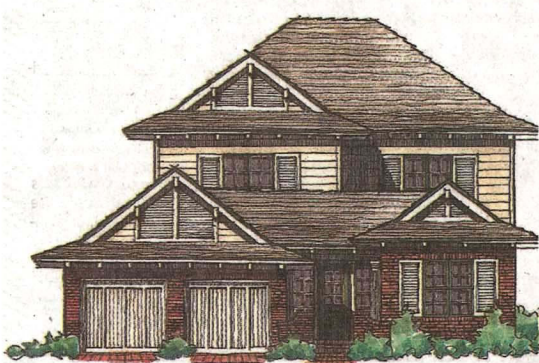
REAL ESTATE CLASSIFIED  
INSIDE AND ONLINE  
orlandosentinel.com/realstate/



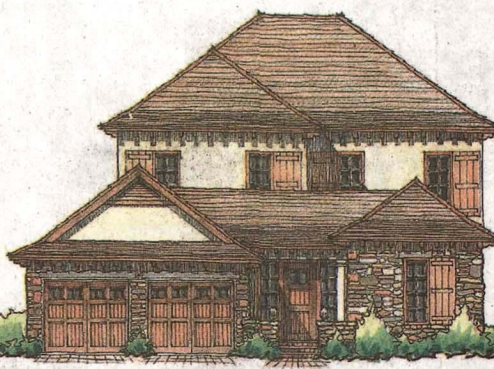
Orlando Sentinel

SUNDAY, SEPTEMBER 12, 2004 J13<sup>L</sup>

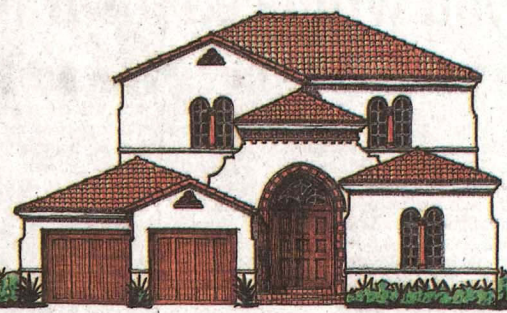
## HOMES 2



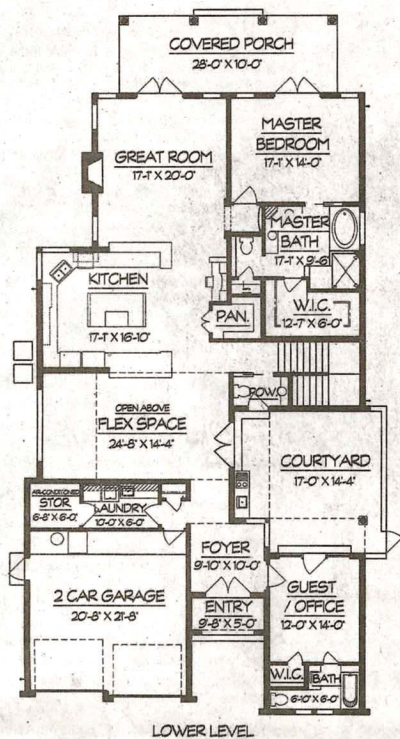
**Florida coastal.** Deep red brick with horizontal siding, double-hung windows with louvered full shutters, double-pitched hipped roof with full louvered gable accents, and exposed rafter tails.



**French country.** Stone and stucco exterior, flat tile on double-pitched hipped roof, exposed rafter tails, wood entry door with sidelights and matching garage doors, casement windows with wood shutters.



**Spanish.** Stucco walls, barrel tile roof, terra-cotta tile gable louvers, hipped roof, casement windows with arched tops, double entry doors with decorative windows above, and matching garage doors.



## Design of the Week

**Name:** La Paloma.

**Architectural style, details:** 7 elevations are available, including Spanish/Mediterranean, classical, French country and Florida coastal.

**Size:** Living area — first floor 2,523 square feet, second floor 1,118, total 3,641; garage, 500; entry, 71; courtyard, 244; covered porches, 406; and balcony, 255.

**Rooms:** First floor — foyer; guest room or office with walk-in closet, private bath and door to the courtyard; laundry room; air-conditioned storage room; flex space with double doors to the courtyard; half-bath; kitchen with island, pantry and desk; great room with fireplace and double doors to the covered porch; master suite with doors to the porch, private toilet, shower, garden tub and walk-in closet; and 2-car garage. Second floor — game room, 2 secondary bedrooms with doors to the balcony and 2 bathrooms.

**Outstanding feature:** The side courtyard has an outdoor

kitchen.

**Ceilings:** 10 feet on the first floor, 9 feet on the second floor, 2-story in the flex space and 16 feet in the foyer.

**Dimensions:** 45 feet wide by 93 feet 8 inches deep.

**Construction:** Concrete block on concrete slab; wood frame upper level.

**Estimated cost:** \$185 per square foot, or \$673,585, without the lot.

**Energy features:** R-20 Icynene insulation in the attic; R-3 in the concrete block walls; R-19 in the wood frame walls.

**Options:** Choice of three elevations.

**Designer:** Lucia, Kassik and Monday in Winter Park, a member of the Florida Society, American Institute of Building Design.

**Plan No.:** OS-10-465.

**How to order:** For a study plan, priced at \$95, or to find an AIBD member in your area, call 407-673-7247.

