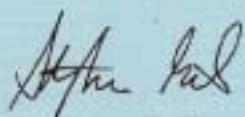


PSG Idea²⁰⁰⁷ Book

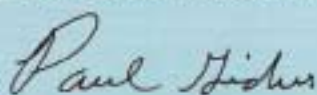
NEW CUSTOM HOMES
WHOLE HOUSE RENOVATIONS
INTERIOR REMODELING

Welcome!

Thank you for your interest in our newly updated publication, the *PSG Idea Book*. Published as *The PSG Report* beginning in 1997, the magazine was designed to provide inspiration for your building projects. That goal remains the same today. With our new publication, we've added more beautiful photography, omitted advertising, and given it a more inspirational name. We hope you'll like our new format so much that you'll keep it with your other home and garden magazines, and refer to it when you are ready to tackle your next building project!



Stephen Gidus, Co-Owner
PSG Construction Inc.



Paul Gidus, Co-Owner
PSG Construction Inc.

PSG
CONSTRUCTION INC.

On the Cover: Evening brings a soothing calm into the great room (also shown below). Whether the view includes the sunset or the fireworks at Disney, this inviting space is perfect for relaxing at the end of a busy day.



This breathtaking 6,227 sq. ft. ultra-contemporary home completely renovated by PSG is located on Lake Tibet. In the great room, bold blue furnishings highlight the owners'

Windows on the Water



Photos: Sweet & Style

art collection. Always in touch with the lake, a custom designed, free-standing art display separates the living room and dining room without sacrificing the lake view.

2006 Parade of Homes Remodelers™ Showcase winner
2006 Home of the Year Merit winner



Master Bath Before



Master Bath After

In the master bathroom, whimsical glass mosaic tile, pendant lighting and custom shaped cabinets set the tone. A stunning view of the lake is provided by the expansive window over the tub. More photos at www.psgconstruction.com.

www.psgconstruction.com
407.628.9660

New American Renovation

Couples Sophistication and Practicality

2006 Parade of Homes Remodelers™ Showcase winner
2006 Aurora Award winner

The owners of this 1950's ranch near Leu Gardens had no intentions of adding on when they tackled this whole house renovation. The goal of this busy couple was to make the existing space meet the needs of their contemporary lifestyle and provide luxurious surroundings for their off-hours. **By removing a wall between the existing living/dining area and kitchen,** PSG Construction provided a spacious feel and room for entertaining.



www.psgconstruction.com
407.628.9660



Kitchen Before



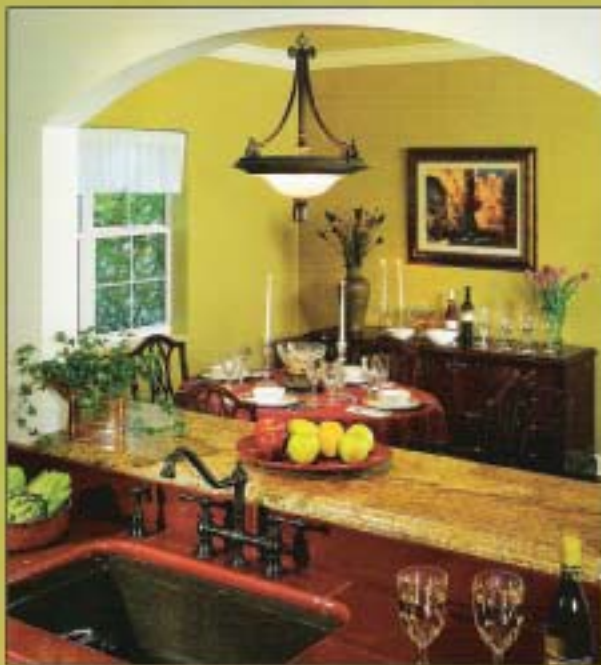
Kitchen After

In the kitchen, Shaker-inspired cabinetry is accented by state-of-the-art appliances including a 48" stainless steel refrigerator, convection/microwave oven, and cook top with retractable downdraft. A warming drawer is tucked into the center island. Granite countertops and tile floors complement the rich wood color of the cabinetry. An opaque glass door leads to the laundry/mud room. More photos at www.psgconstruction.com.



Kitchen Before

Not willing to relinquish the charm of their 1930's Mediterranean style home, Bruce and Roxanne Rose still knew it was time to do something about their sorely outdated and inaccessible kitchen.



Kitchen After



Kitchen After



After

Newsbite | A PSG kitchen and whole house renovation were included in an article titled "Amazing Transformations: Interiors" in the May 2006 issue of *Orlando* magazine.

Center Stage



A wall was removed and space reconfigured to give the homeowners a completely new way of using their kitchen. New oak hardwood floors were installed to match the existing floors. A deep burgundy Lavastone countertop brings color into the kitchen and accents the bronze color sink. Intricate tile work highlights the cooktop. The built-in refrigerator appears to be a beautiful piece of furniture. Stained cabinetry is coupled with distressed pieces painted a mellow sage. Once isolated, the kitchen is now a natural and delightful gathering space for the family. More on this project at www.psgconstruction.com.

www.psgconstruction.com
407.628.9660

Farmhouse Kitchen

Comes to the City

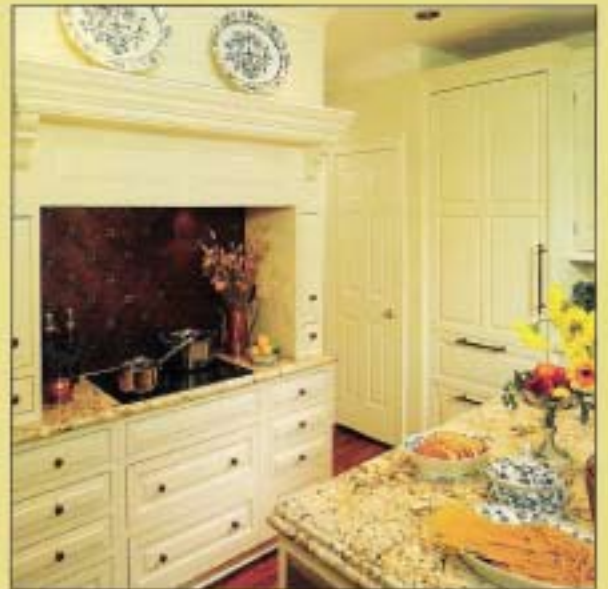
Wanting a kitchen that had a farmhouse feel to it—but was still sophisticated and updated—former Midwesterners Elizabeth and Tim Roehlk sought out PSG Construction to complete their kitchen renovation. Desiring “each room to be its own space” the homeowner requested that the opening between the kitchen and living area be reduced. Now, a graceful archway flanked by four columns divides the kitchen from the rest of the house. A cream speckled granite countertop complements the cream cabinetry, bead board backsplash, and wood floors.



www.psgconstruction.com
407.628.9660



Photo © Dennis & Jane



More on this project at www.psgconstruction.com.

Newsbite | Two PSG kitchen projects were featured in the May 2006 issue of *Orlando Homebuyer* magazine.



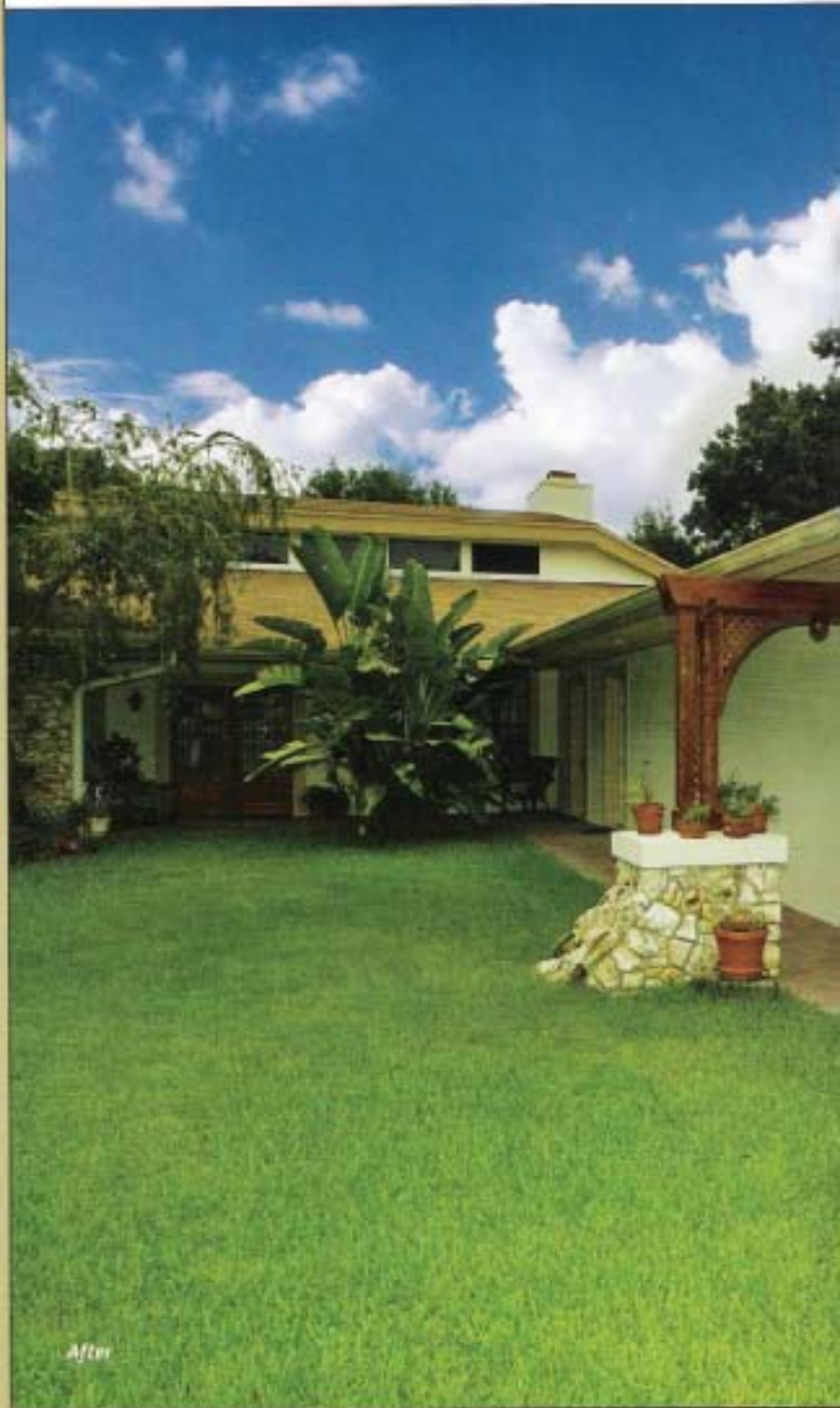
Before



Before



After



After

Newsbite | A whole house renovation completed by PSG was featured in the Spring 2006 *Southern Living Ultimate Before & After*. Visit www.psgconstruction.com to see the article.

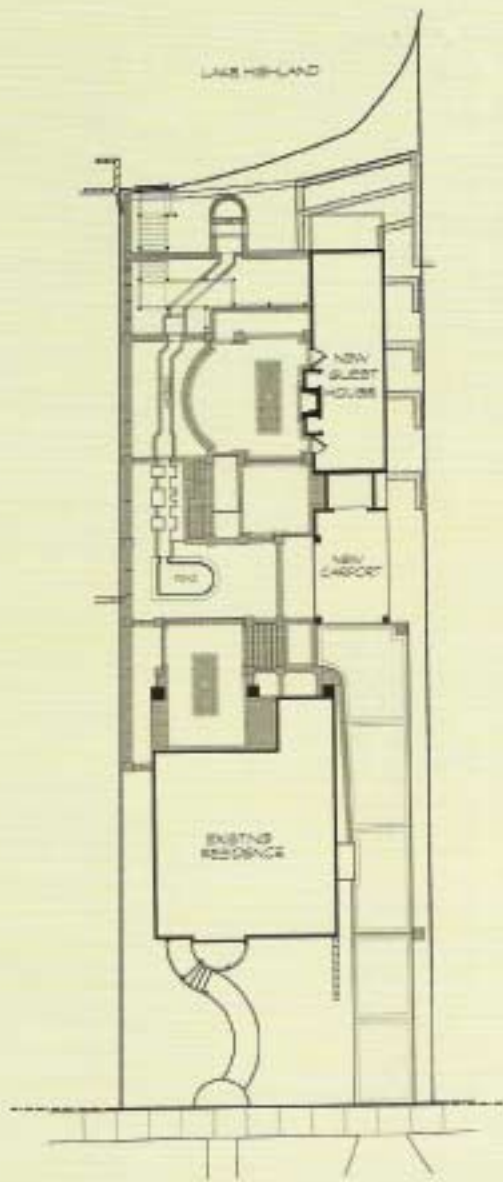
Guest Appeal



Making the homeowner's mother feel welcomed and comfortable when she came to visit from New England was the goal of this guest suite addition. In addition to the spacious guest room, bath, and access to a side patio, the new space also includes a private entry, foyer, and drop zone that the family can take advantage of. On the exterior, guests are welcomed with a new arbor entrance accented with a stone base that is repeated on the stone insets on the new garage. Brick-look concrete pavers replace the stamped concrete driveway. More on this project at www.psgconstruction.com.

www.psgconstruction.com
407.628.9660

Zen Garden Harmony



www.psgconstruction.com
407.628.9660

In keeping with the rich history and craftsmanship of the original circa 1927 home—and historical renovation to the main house—the addition of over 1,000 square feet of terraced hardscape and landscape create a Zen-like experience for homeowners Duke and



Colleen Woodson. The 3-level project includes a grilling station, fireplace, stream, fountain, fire pit, potting shed, and guest suite. More photos at www.psgconstruction.com.



Centering around the stream, which meanders from one level to the next, the back yard retreat can be enjoyed from all levels of the main house.



Between the grilling station and outdoor fireplace, a door leads to the guest suite.



Vacation Living at Reunion Resort & Club of OrlandoSM

PSG Construction is proud to be a select builder at Reunion Resort & Club of OrlandoSM. PSG co-owner Stephen Gidus says the opportunity has been significant for PSG. "Our clients at Reunion include fascinating people from as far away as South Africa and Great Britain who want to make Central Florida their second home. Working with such a diverse group of clients only strengthens what we can offer our clients right here in Central Florida."

The homes built by PSG focus on flexible and creative living space that can change with the homeowner's needs and lifestyle. More information, photos and floor plans are at www.psgconstruction.com.



Lower Level



Upper Level

Watch Progress of **First-Ever**
Renewed American Home
 on Live Camera!



Lower Level After



Upper Level After



Basement



Lower Level Before



Upper Level Before

See floor plans
 for garage and
 garage apartment at
www.psgconstruction.com.

PSG Construction Inc. is proud to be selected as the builder of the first ever Renewed American Home® (TRAH) by the National Association of Home Builders (NAHB) to be featured in conjunction with the NAHB and 2007 International Builders Show in Orlando, Florida. With the addition of a basement and other new space, the renovated 1909 Lake Eola home, originally consisting of 2,462 square feet, will have 7,175 square feet under roof (5,860 square feet air-conditioned.)

Watch the progress on live camera and see frequently updated progress photos at www.psgconstruction.com. Look for the TRAH logo on the PSG home page.

www.psgconstruction.com
 407.628.9650

For the Love of Cooking



Before

Dr. Lou and Adrienne Payor wanted to update their kitchen and make it more conducive to having two cooks in the kitchen.

More on this project at www.psgconstruction.com



After

Photos © Everett & Soble



After

Adjacent to the French doors is a hutch built from the same cherry cabinets as those on the perimeter of the kitchen. The glass fronts allow family heirlooms to be displayed. The hutch was designed to stop short of the top of the base to make room for the family's Christmas village that is brought out for the holidays.

An oversized island is a stunning focal point with an 800-pound solid slab granite countertop. Because of the weight, island countertops of this size typically are made from two pieces. The Payors insisted on a single slab to avoid seams. Set on top of black painted cabinets with a rub-through finish, the countertop also complements the cherry cabinets.

PSG
CONSTRUCTION INC.

www.psgconstruction.com

PAUL AND STEPHEN GIDUS CONSTRUCTION

407.628.9660

PSG Construction Inc.
803 South Orlando Avenue / Suite A
Winter Park, FL 32789

Standard Presort
U.S. Postage
PAID
Permit 1979
Orlando, FL